



- + M/S STAR
- + Work planning
- + Event
- + Equipment
- + Material and services
- + Purchasing
- + Crew
- + Budgets
- + Addresses
- + Documents
- + Insurance
- + Common codes

In addition to the demands from shareholders, employees and customers, shipping companies must also meet the requirements of IMO, rules and regulations from national administrations and classification societies.

The Star systems help improve safety through:

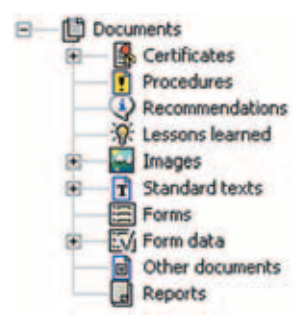
- Improved maintenance & condition control
- Better contingency planning & handling
- Better follow-up of accidents & near accidents
- Better follow-up of non-conformities
- More precise ship – shore data replication
- Improved quality on information for management & operation

Shipping companies invest in modern IT solutions to reduce cost, to improve safety and to increase profit. The Star systems play important roles in achieving:

- Reduced off-hire
- Better documentation for claims & settlements
- Reduced insurance premium
- Reduced maintenance cost
- Optimized spare part inventory & consumption
- Better business to business e-commerce
- Reduced communication cost
- Reduced repair yard bills
- Increased second hand value
- Improved environmental protection
- Professional IT environment
- Compliance with ISM and ISPS code requirements

Star Document

A SYSTEM FOR DOCUMENT HANDLING IN FLEET AND SHIP MANAGEMENT



Star Document is a system for handling of documents, including texts, images, forms and reports, on shore and on board. The system covers all kinds of document types like IMO forms, noon reports, instruction films, class requirements, engine reports, port call documents and tailor made forms etc.



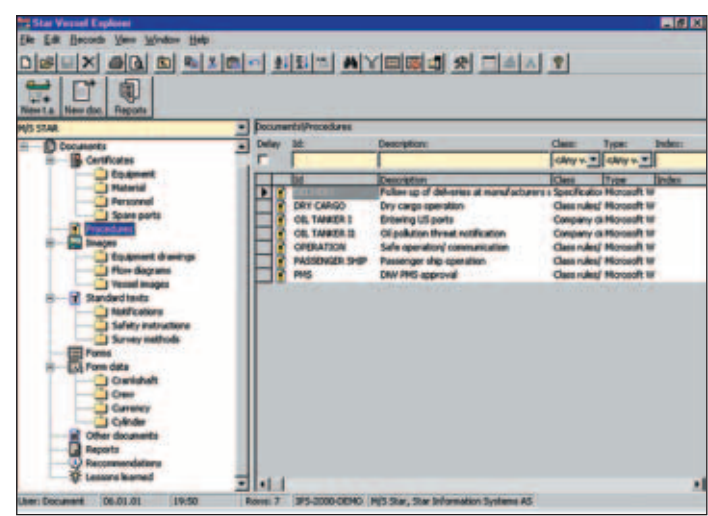
The system is designed to help fleet and ship management to:

- Issue & handle documents
- Handle certificates
- Link photos & images to reports, etc
- Standardize procedures across the fleet
- Administer forms for ship operation
- Generate reports for various managerial levels
- Log recommendations & lessons learned.
- Replicate data between ship and shore

Star Document is used to standardize document handling throughout the company.

Easy to use

The system applies standard user interface and standard tool bar icons. Quick keys are available for fingertip control of all main functions. The system uses wizards for planning and reporting. Ship and office personnel will be guided in accordance with company rules when entering data into the system.



* Star Vessel Explorer with Document Module *

Star Document

Document revision records

Star document keeps records of document particulars, connections, revision numbers, reviser and revision date.

Document storage

A document may be filed outside or inside the program database. If a drawing is stored in the database it will be replicated between ship and office.

Forms & reports

Star Document holds a library of forms and reports that are normal in vessel operation. The system can present scanned documents, video recordings, images, cad drawings, forms, text, graphical reports, etc.

Other forms are applied in vessel operation and port/terminal relations.

Reports are available to meet the requirements of cost control, inventory control, consumption analysis and requirements of authorities, IMO, ISO, as well as the classification society.

Special forms and reports may be tailor-made according to customers' specification.

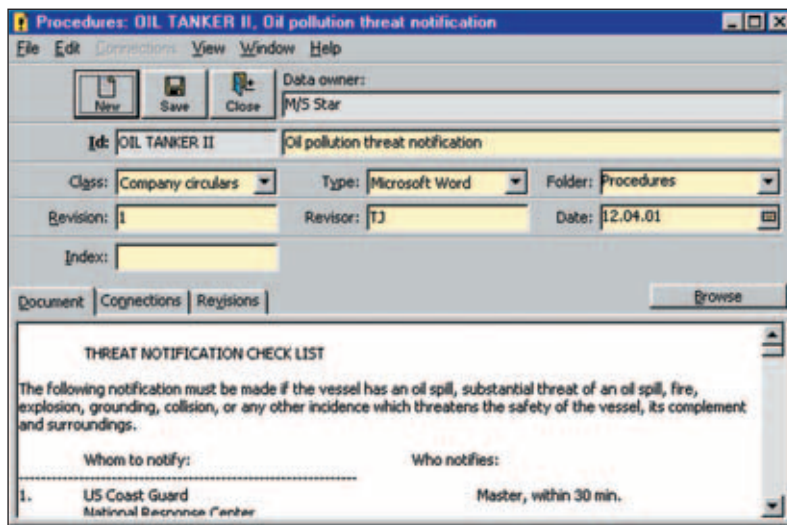
Integration with other Star systems

Star Document may be used as a stand-alone program on board and on shore. The system is normally an integrated part of Star Fleet Management System with seamless data replication between the ship and the office.

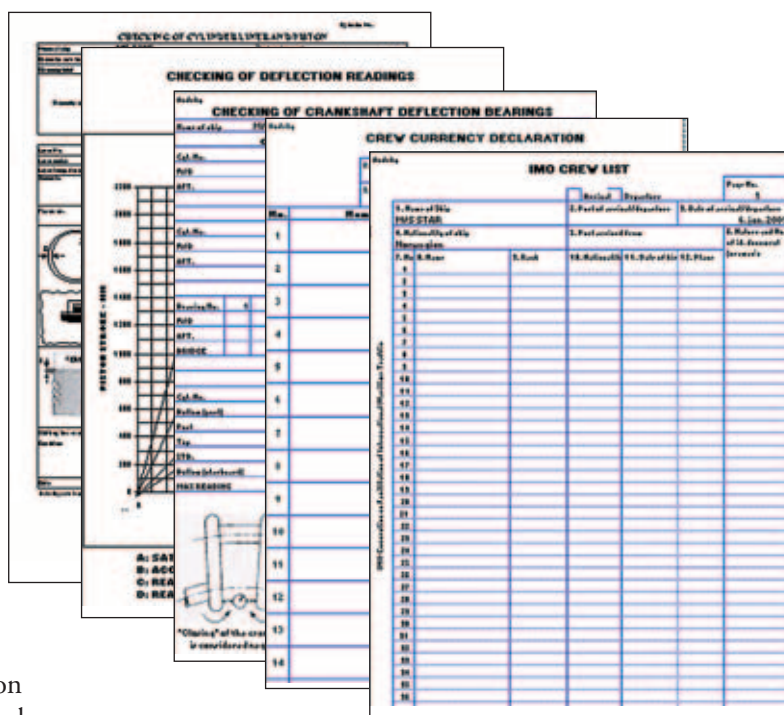
Technical Data

Star Document can be run on Windows 98/2000/NT/XP workstations. The program uses SQL databases like Oracle, MS SQL Server, or Sybase.

For more information about this or any other Star Information Systems' products, please contact your local distributor or one of Star Information Systems' offices.



* A document file *



* Examples of standard forms *



Star Information Systems AS

www.sismarine.com

Main office

Kjøpmannsgaten 35
NO-7011 Trondheim, Norway
Tel: +47 73 87 62 00
Fax: +47 73 87 62 19
E-mail: company@sismarine.com

Sales office

Stortorvet 5
NO-0155 Oslo, Norway
Tel: +47 22 47 69 10
Fax: +47 22 47 69 19
E-mail: sales@sismarine.com